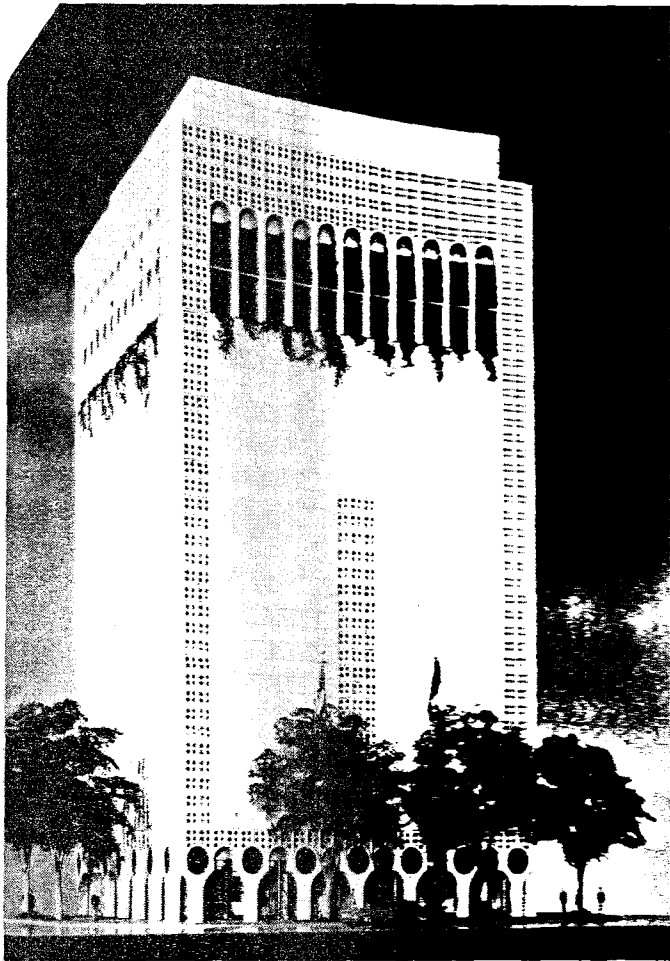
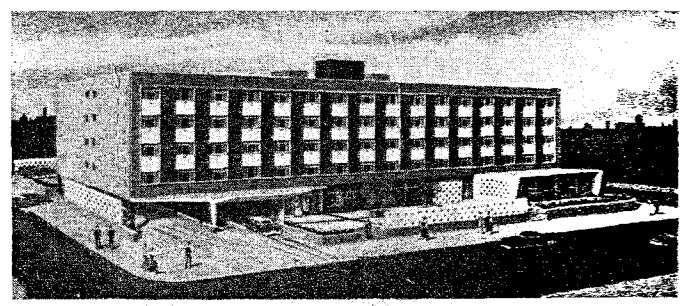


on 29 June

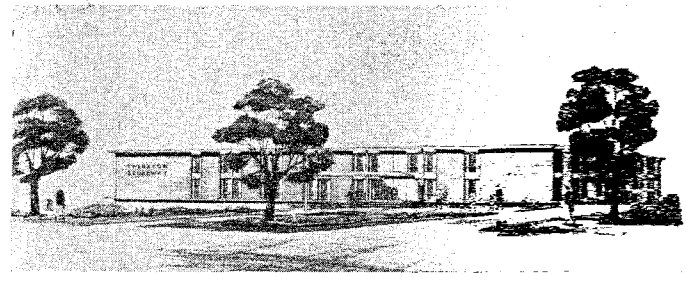


Edward D. Stone is the architect of the Gallery of Modern Art, the new museum commissioned by Huntington Hartford for a site on New York's Columbus Circle. Construction will start in the fall on the nine-story structure; total cost is estimated at \$2 million. The photograph above shows how the building will look at its site, with its northern facade slightly curved in "recognition" of Columbus Circle; two of the dimensions are 75 ft, the others, 100 ft and 41 ft. Four floors contain galleries, with intermediate lounge floors. A 150-seat basement auditorium and a top-floor restaurant are included. The reinforced concrete structure has a skin of white Vermont marble. Severud-Elstad-Krueger-Assocs., structural engineers; Peter Bruder, mechanical engineer; William L. Crow Construction Co., general contractor

New York City's first motel is the Skyline Motor Inn, scheduled for completion next month. The \$1.5-million building has five stories and 130 rooms, with parking space for each (100 cars in the garage, 30 more behind the motel). The block-long structure, at Tenth Avenue and 49th Street, contains 25,000 sq ft. The exterior is white, gray, and black glazed brick, with the same colors, plus orange and gold, inside. Guests drive into the main lobby to register. A restaurant, bar, and coffee shop are included. Leo Skillman, architect; Weinberger, Freeman, Leichtman & Quinn, structural engineers; Diesel Construction Corp., general contractor



Construction started last month on the Sheraton Baltimore Inn, in that city's Broadway Redevelopment Project near the Johns Hopkins Hospital. The three-story hotel, with main entrance at the intermediate level, is to serve both the hospital and the public. There are 150 guest rooms, many of them facing on a landscaped court, and parking for about 160 cars. Basic construction is wall bearing, with precast plank flooring system and brick, aluminum, and glass exterior. Cochran, Stephenson & Wing, architects; Van Rensselaer P. Saxe, structural engineer; Henry Adams, Inc., mechanical engineers; Morros Bros., Inc., general contractor



Believed to be the first circular hotel in the United States, La Ronde, in Philadelphia, is a nine-story concrete and glass cylinder, 150 ft in diam. Cost of the structure, on which construction is to start in September, is about \$3.5 million. The owners are Ephraim J. Frankel and Richard I. Rubin. There are 210 rooms, each outside with private bath. A year-round garden occupies the center of the circle, and parking for about 500 cars is provided. Copper-tinted glass for exterior windows and triangular concrete projections above them are used for sun control. Circular concrete entrance canopies shelter guests coming directly from their cars to the main lobby. The lobby floor includes a restaurant, bar, 500-seat banquet hall, and three meeting rooms. A terraced dining patio adjoins a swimming pool. Thalheimer & Weitz, architects

